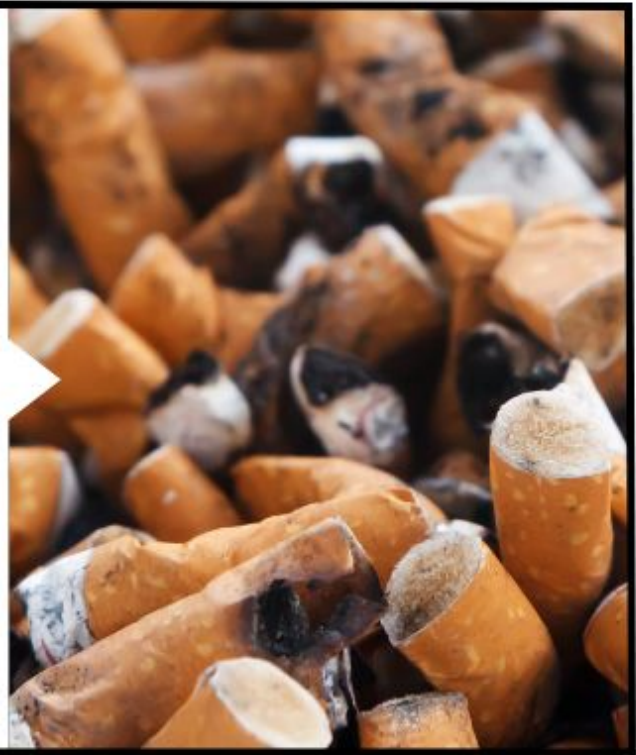


#1 - Millions of these were found littering local beaches, bays, parks, and streets. These contain hazardous chemicals including benzene, arsenic and formaldehyde that leach into local waterways when littered on the ground.



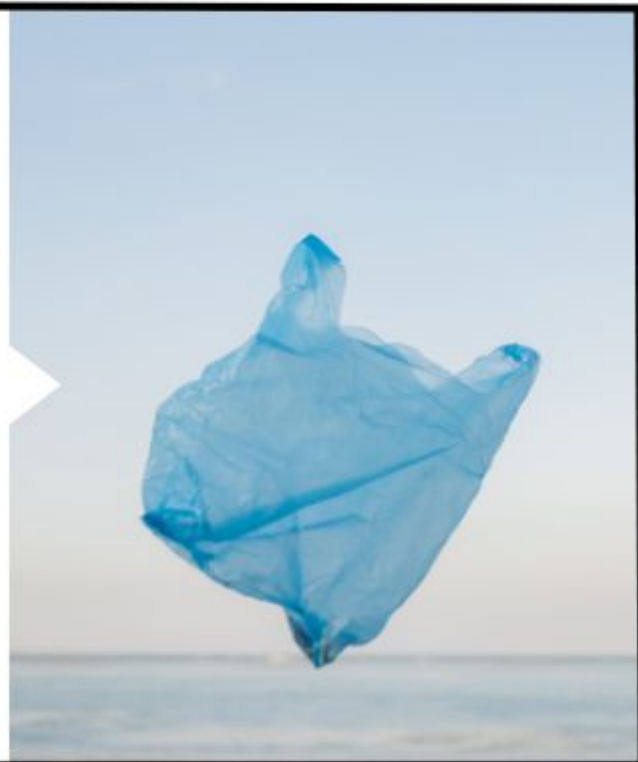
#2 - These single use items are easy for food on the go yet hard to recycle, meaning most end up in landfills.



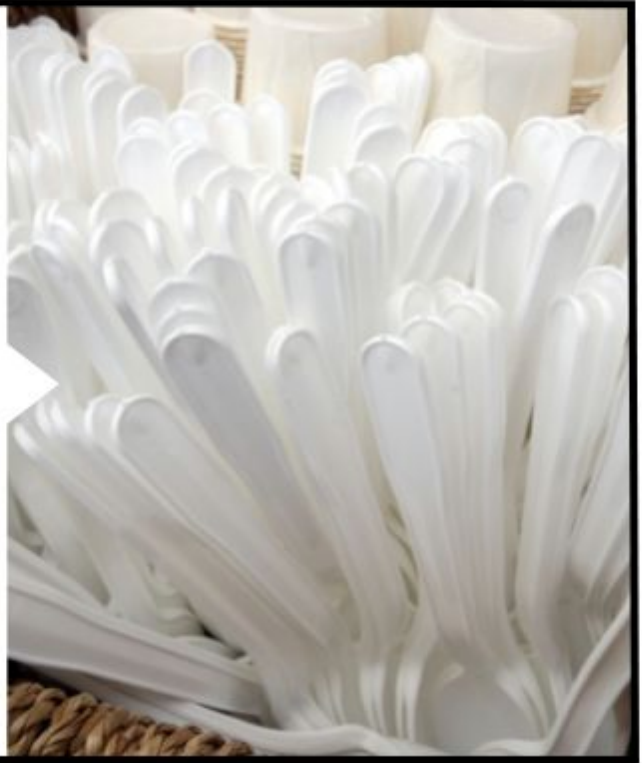
#3 - Billions of these items are opened every day in the US, and unfortunately many end up in our oceans and on our beaches instead of staying attached to the bottle. Marine mammals, birds and fish often mistake these small, often plastic items for food and eat them, leading to injury and death.



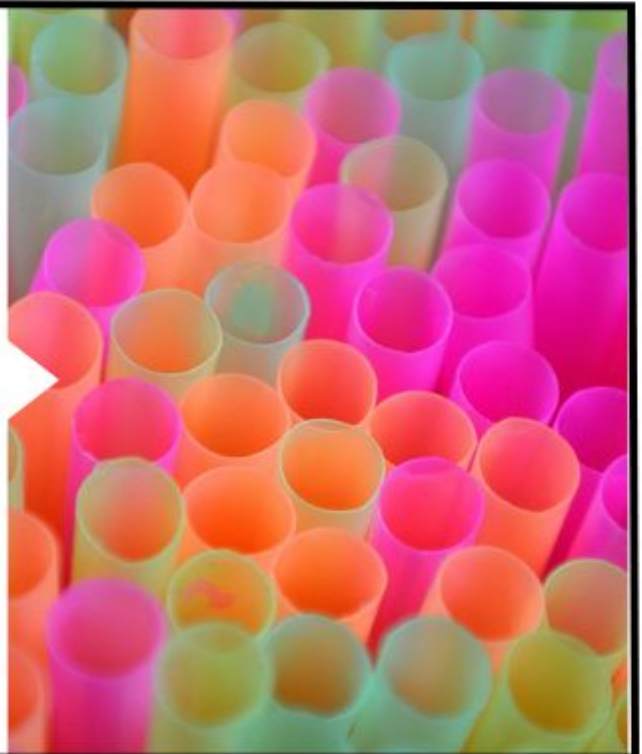
#4 - These items hurt animals at all levels of the food chain. They are often accidentally eaten by ocean animals or cause animals to get tangled up or trapped. They are difficult to recycle and often clog recycling machines.



#5 - Americans use billions of these commonly littered items each year. These items are typically not able to be recycled, and most end up in landfills or out in the environment as litter. Reduce your waste with a reusable choice instead.



#6 - More and more Californians choose to refuse these single use disposable plastics with their drinks, with restaurants offering them more and more by request only.



#7 - This item may break apart when it hits a hard surface into dangerous sharp pieces that cause cuts and injuries to humans and animals when found on beaches and other public areas.



#8 - This single use item found commonly littered in public areas are convenient to take along on a walk or run but can be reduced by switching to a reusable alternative.



#9 - This commonly littered item can be recycled over and over again forever. Creating these from recycled material saves up to 95% of the energy it takes to create from new material.



#10 - This item can be many different things when dumped and can hurt humans and animals alike. It is often sharp and/or broken items with different sizes and weights.

